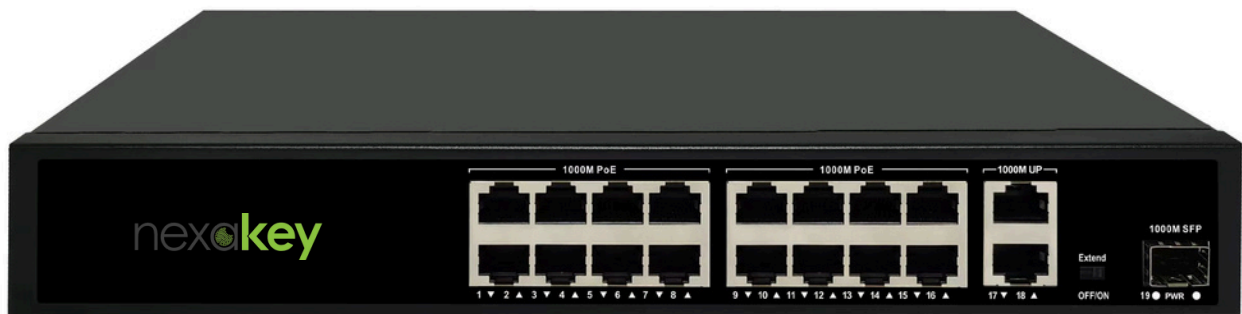


# NS-6000GS Series

10/100/1000 Unmanaged PoE Switch



## NS-6000GS-16P2U1S

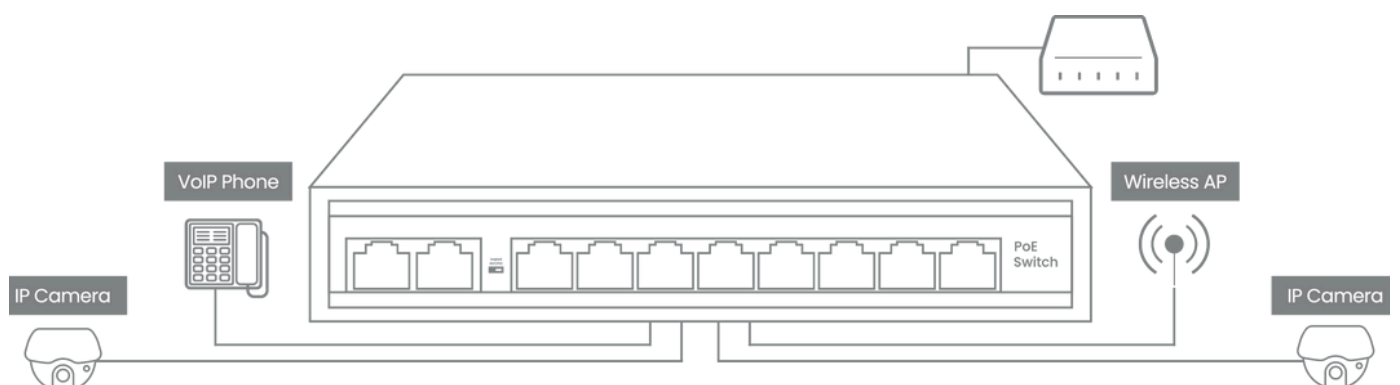
16 Port 1000M Unmanaged PoE Switchch 2Uplink and 2SFP

### OVERVIEW

NS-6000GS series PoE switch meets the demand of PoE power supply. It adopts the latest high-speed Ethernet switching chip and ultra-high backplane bandwidth design, with extremely fast data processing capability to improve smooth data transmission performance. It has 16 PoE-powered RJ45 ports, 2 RJ45 uplink ports and 1 independent SFP expansion slot. All of sixteen RJ45 ports support IEEE 802.3af/at standard, with a maximum power supply of 30W for a single port and 300W for the whole machine, which can automatically detect and identify the powered devices that comply with IEEE 802.3af/at standard and supply power for the priority mechanism through the network cable.

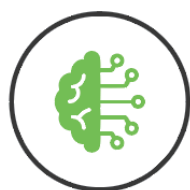
### FEATURES

- 16\*100/1000Mbps PoE ports, 2\*10/100/1000Mbps uplink port, 1\*1000Mbps SFP Slot
- Support IEEE802.3af/at
- Support restrain network storm, VLAN function
- Support Max Transmission distance up to 250m
- All port supported by MDI/MDIX auto flip and self-negotiation
- Built-in power supply
- Maximum power of single PoE port: 30 W
- Whole machine power: 300W
- Adopts store-and-forward architecture
- Fanless, natural cooling, small, compact and quiet design, suitable for desktop or wall
- Support lightning protection 4KV

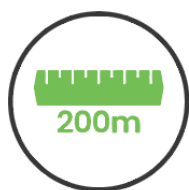


## SPECIFICATION

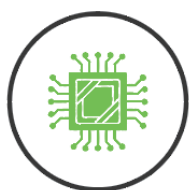
NS-6000GS-16P2U1S			Description
Power	Power Adapter Voltage		AC 110V-240V
	Consumption		300W(52V,2.3A)
Network Connector	Network Port	PoE Ethernet Port	1 ~ 16 Port : 10/100Mbps
		Ethernet port	Uplink Port : 10/100/1000Mbps
		SFP Port	SFP Port: 1000Mbps
	Transmission Distance		1 ~ 16 Port : 100Mbps:0~100m; 10Mbps: 0~250m;
			Uplink Port : 0 ~ 100m
			SFP: depends on the optical module(20km...100km )
	Transmission Medium		Cat5/5e/6 standard network cable
Network Switch	Network Standard		IEEE802.3/802.3u, IEEE802.3x,IEEE802.ab
	Switching Capacity		9.2Gbps
	Packet buffer memory		1Mbits
	Throughput		6.8448Mpps
	MAC Table		2K
	Paket Forwarding Rate		10Mbps:14880pps/port 100Mbps:148800pps/prt 1000Mbps:1488000pps/port
Power Over Ethernet	PoE Standard		IEEE 802.3af/at
	PoE Power Supply		End-Span(1/2+;3/6-)
	PoE Power		af=15.4W,at=30W
RJ45 port	Port Function		Power priority mechanism, fast and forward, MAC automatic learning and aging IEEE802.3X Full-duplex and mode and backpressure for Half-duplex mode
LED Indicator	LED Indicator		LINK/ACT.100Mbps;PoE Status Indicator; Power indicator;Extender
Environmental	Working temperature		0°C~55°C
	Relative Humidity		20~95%
	Storage temperature		-20°C~70°C
Mechanical	Dimension (L×W×H)		440mm*285mm*55mm
	Color		Black
	Weight		4.2kg



Intelligent PoE Management



Up to 200m Long Range PoE Transmission



4/8-Core Adaptive Power Supply with Less Power Loss  
[www.thenexakey.com](http://www.thenexakey.com)



6KV Surge Protection to Improve Reliability in Harsh Environment



Design for Video Transmission